

KIVERCO®

The World's Toughest
Recycling Plant Since 1993

2023 COMPANY BROCHURE.



KIVERCO®
30 YEARS
SPECIAL EDITION

KIVERCO.COM

K
BUILT WITH
BACKBONE

2023 COMPANY BROCHURE



KIVERCO®

The World's Toughest
Recycling Plant Since 1993

KIVERCO

Kiverco has built The World's Toughest Recycling Plant Since 1993.

Our plant delivers More Uptime, Higher Sustained Purity and has a Longer Useful Life than anybody else.

This, in turn, delivers Predictable Performance and Profitability – for you.

04	30 Years in 30 Seconds
06	World Class in Northern Ireland
07	Welcome
08	Kiverco in Numbers
09	Good to Know
10	Bespoke Plant - Averda
12	Bespoke Plant - Collards
14	Bespoke Plant - Dulsco
16	Bespoke Plant - Excel
18	Bespoke Plant - Remondis
20	Bespoke Plant - WRC
22	Customers
23	Sustainability
24	Kiverco Aftercare
26	A Global Business
28	Notes & Ideas
30	Contact



The sorting and recycling of waste is no longer considered the righteous choice for businesses and governments. It's the only choice.

But as with all things of importance and magnitude, there is a right way for things to be done.

30 years.

For the last 30 years, we and the Kiverco team have not been working hard to create the most Recycling Plant we can. We have been working hard to create the best and the Toughest Recycling Plant we can.

And that's why, when it comes to sorting for recycling anywhere in the world, we are entirely confident in stating that the Kiverco way is the best way.

World Class in Northern Ireland.

'World Class In Northern Ireland' is something we have always aspired to and - we think - achieved. And the vision has never changed since day one.

Thank you for exploring working with us."

ANNE MCKIVER & AIDAN MCKIVER.
DIRECTORS.



What We Do.

Design and Manufacture of Static and Mobile Recycling Plant. Solutions are bespoke, or from our core range.

Where We Work.

Globally. From our HQ in Dungannon, Northern Ireland.

Who We Work For.

Waste Management Companies. Governments & Local Authorities. Rental Companies.

How We Do It.

Overspecification at key design and manufacturing stages. 30 years of experience, a World Class team, plus planning for long-term, exceptional usage.

Why We Do It.

We believe in a world where recycling plant recycles much more, much more accurately, for much longer. So that's the world we're building.

How do we know how well we're doing?

Our own Marketing Analysts measure and report on how well we do in the areas of More Uptime, Higher Sustained Purity and Longer Useful Life.

Kiverco's Aftercare team seek to optimise these things too, post commissioning. We measure and report on our own targets, historical performance plus industry norms.

KIVERCO®

**30 YEARS IN
30 SECONDS.**

**The World's Toughest
Recycling Plant Since 1993**



**More Uptime
Higher Sustained Purity
Longer Useful Life**



**Long Term,
Predictable Profitability**

Profitability is Good. Predictable Profitability is Better.

When you believe in something. Like we believe in a world where Recycling Plant recovers much more, much more accurately, and for much longer. The vision is all you see. It's been like that for Kiverco for 30 years.

What This Means To You.

This means the two people that'll love your new Kiverco plant the most are you. And your accountant.

When you see your Kiverco plant in action, you'll love it. Almost as much as your accountant will when they see the money it makes you.

Because when you choose Kiverco, you're not only choosing the World's Toughest. You're choosing long-term Predictable Profitability, too.



KIVERCO IN NUMBERS.

400

Kiverco has delivered over 400 projects, and is active across 4 continents.

£25 MILLION+

Kiverco's sales turnover will pass £25 million in 2023.

5

We process 5 main waste streams. Construction and Demolition (C&D), Commercial and Industrial (C&I), Dry Mixed Recyclables (DMR), Municipal Solid Waste (MSW) and Plastics.

30

Kiverco has been around for 30 years in 2023.

130

Kiverco's manufacturing footprint will be 130% larger by the end of 2023 than it was at the beginning.

100+

The Kiverco Team, across all departments, is accelerating past 100 people in 2023.

20

Kiverco waste plants can recover up to 20 different waste materials within a single solution.

£10 MILLION+

At the end of 2022, Kiverco secured a project double the size of any previous project over 30 years. Project size and scale is no barrier for Kiverco.





KIVERCO®

GOOD TO KNOW.

Power.

Kiverco solutions can be powered by mains electricity or generator power.

Sustainable.

More uptime means fewer environmentally harmful repairs, consumables and vehicle journeys. The World's Toughest Recycling Plant is also the most sustainable.

Adaptable.

Kiverco solutions are flexible and strong enough to handle multiple relocations and evolved application.

Aftercare.

Kiverco Aftercare is world class. Because your success is our success.

Scalable.

Kiverco solutions can be designed to grow with you.

Partnering.

Kiverco partners with World Class brands – only.

Measurable.

Kiverco make valuable, clear, measurable promises. More Uptime. Higher Sustained Purity. Longer Useful Life. No hyperbole. Just clarity.

THE CHALLENGE

One of the largest Waste Management companies in the Middle East approached Kiverco to design a robust plant that could process waste in one of the most challenging yet beautiful locations in the world – the Saudi desert. This Red Sea project remains one of Kiverco's key flagship achievements.

Location Saudi Arabia.

Footprint 98.5m x 26m.

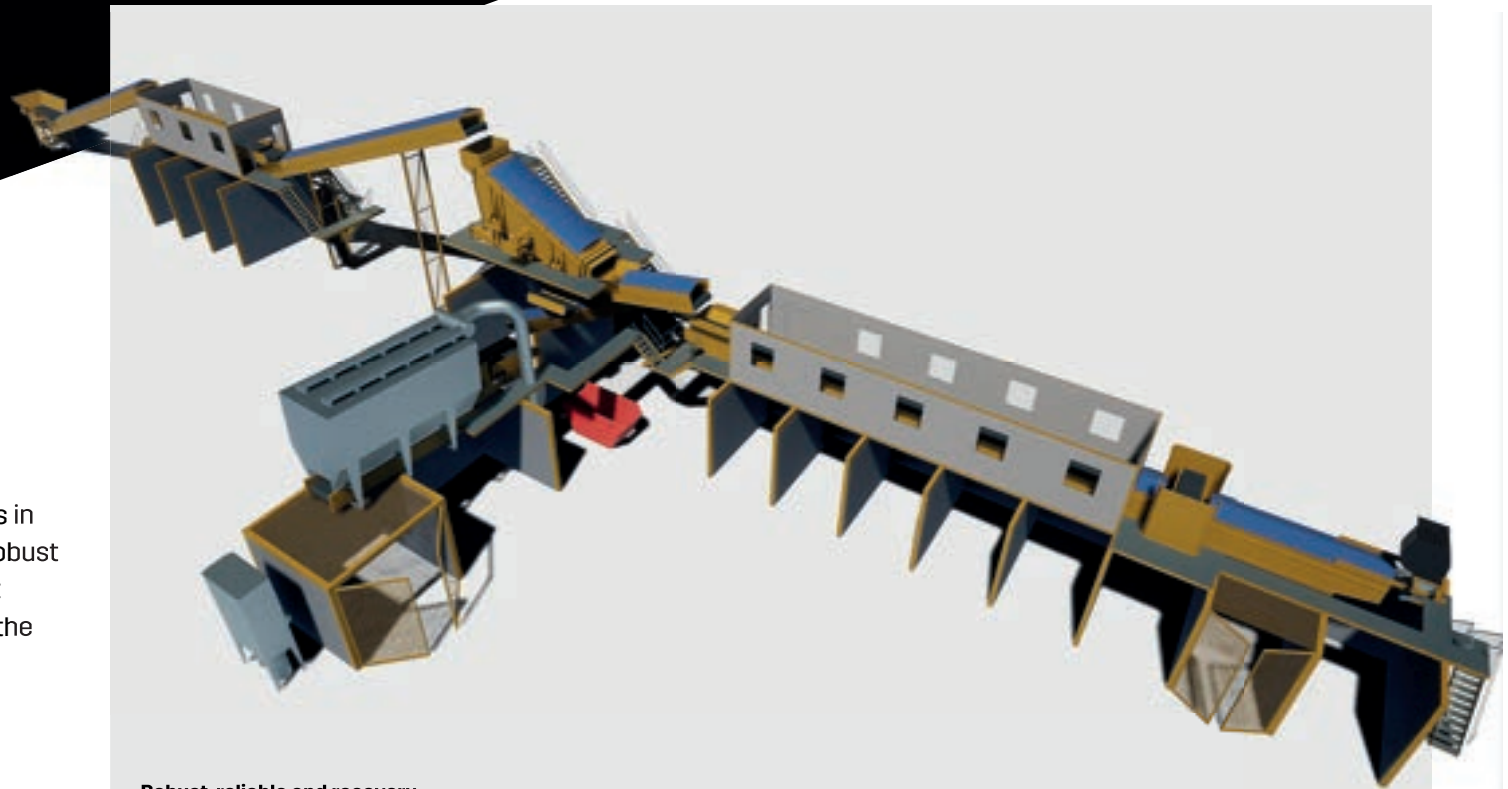
Application Construction and Demolition (C&D).

Throughput 50 tonnes per hour. Recovers up to 10 different waste products.

History First time project.

SOLUTION DETAIL

Crusher, Feeder, Pre Sort Station, 2 Deck Screen, 2 x Magnets, 2 Way Drum Separator, Picking Station, Blower.



Robust, reliable and recovery optimisation were most important to Averda.



Recovers up to 10 different waste products.



Modular design ensures the plant can grow with the business.



**50 tonnes per hour.
C&D waste plant,
Saudi Arabia.**

“ Kiverco are very well known for their design and build quality and have a long history dealing with this type of waste.

I am very confident we have chosen a partner who will work closely with us to deliver this project and facility for Averda and the Red Sea Development Company.”



Install, commission and handover (including operator training) as per agreed project schedule.

GOOD TO KNOW

- The proposed return on investment was realised by Averda.
- Agreed throughput, recovery and purity levels achieved – client acknowledgment.
- All waste created from the construction of the Red Sea development processed daily.
- Three-way air separation system increases recovery to >90%.
- Inert materials repurposed and used in the construction project.
- Install, commission and handover (including operator training) as per agreed project schedule.
- Modular design ensures the plant can grow with the business.
- Excellent aftercare packages including parts, warranties, helpline, and anytime remote access to mission critical data.

KIVERCO®

BESPOKE PLANT • SEP 22

COLLARDS

THE CHALLENGE

Collards is one of the largest privately owned waste management companies in the UK. They approached Kiverco to deliver a robust waste plant solution guaranteed to reliably provide higher levels of throughput, recovery and purity than they had previously enjoyed.

Location Andover, England.

Footprint 37.8m x 42.8m.

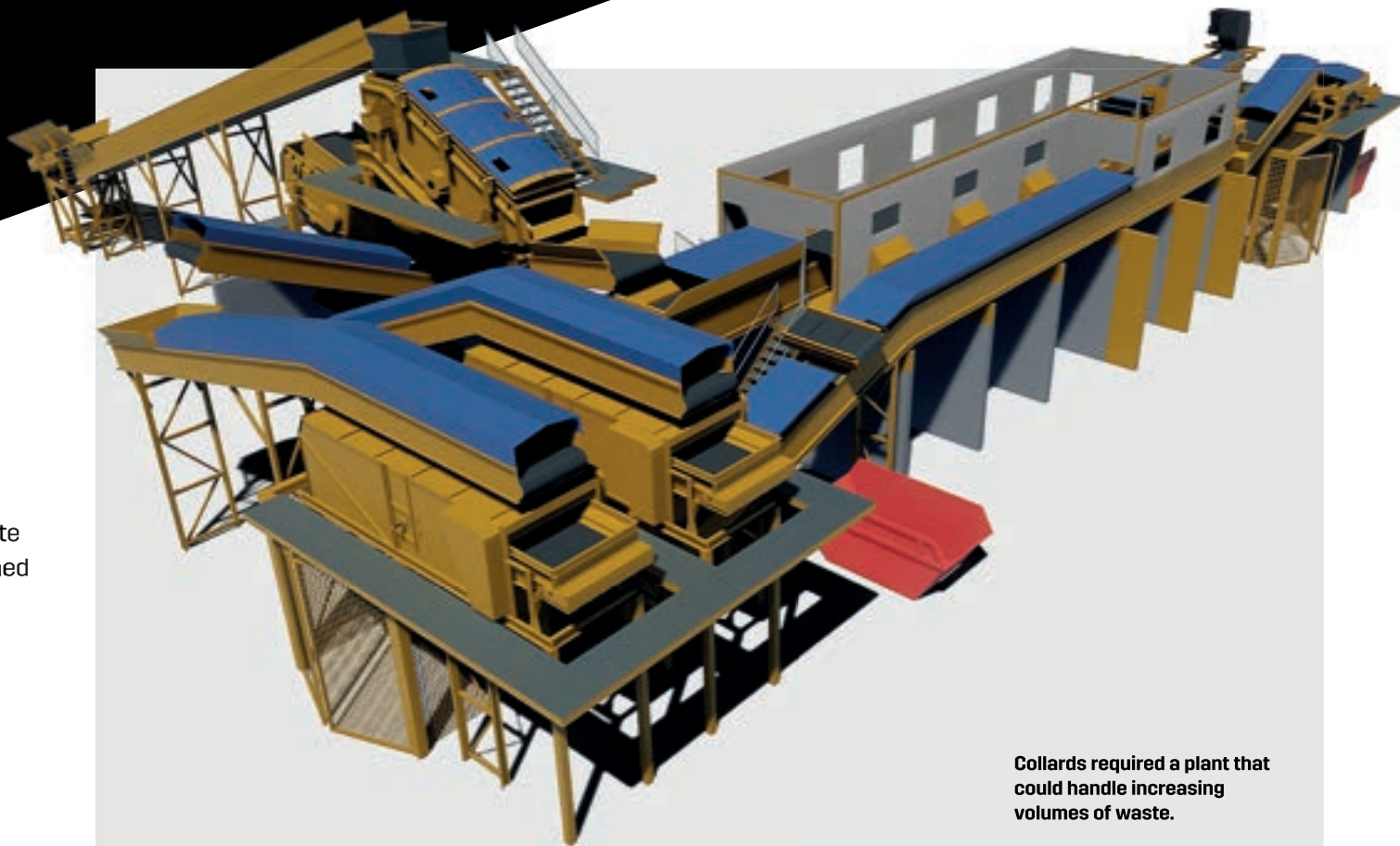
Application Construction and Demolition (C&D).

Throughput 30 tonnes per hour. Recovers up to 11 different waste products.

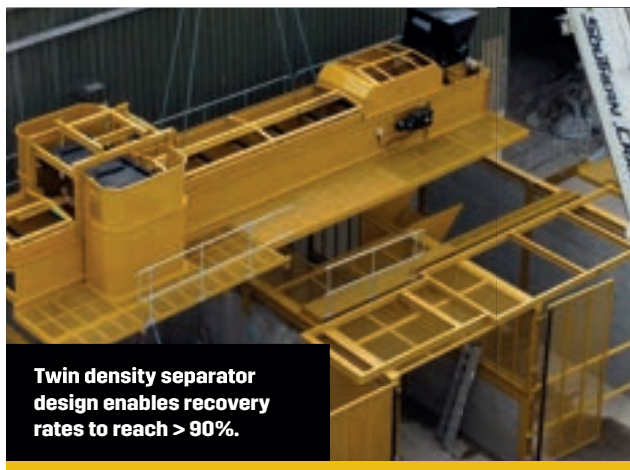
History Fourth project.

SOLUTION DETAIL

Feeder, 2 x Spaleck Screens, 2 x Kiverco Density Separators, Eddy Current Separators.



Collards required a plant that could handle increasing volumes of waste.



Twin density separator design enables recovery rates to reach > 90%.



Modular design ensures that the plant can grow with the business.



30 tonnes per hour.
C&D recycling plant,
England.

“ Kiverco is seen as the Rolls Royce of waste processing plant. We are really confident that their systems will help us divert more waste from landfill and maximise our return on investment. After all, that ROI is what allows us to keep going, and to keep growing, too.”



Dual screen design
increases screening area
and improves separation.

GOOD TO KNOW

- The proposed return on investment was realised by Collard.
- Agreed throughput, recovery and purity levels tested pre-handover as part of Kiverco promise.
- Residual waste reduced to <10%.
- Twin density separator design enables recovery rates to reach >90%.
- Eddy current separator recovers 90%+ mid-size non-ferrous metal.
- Install, commission and handover (including operator training) as per agreed project schedule.
- Modular design ensures the plant can grow with the business.
- Excellent aftercare packages including parts, warranties, helpline, and anytime remote access to mission critical data.

THE CHALLENGE

DulSCO is one of the largest waste management companies in the UAE, helping the local community to thrive. Their aim was to install a waste processing plant capable of exceptionally high levels of separation and recovery at a purity level that would be consistent throughout the life of the plant.

Location Dubai.

Footprint 74m x 24m.

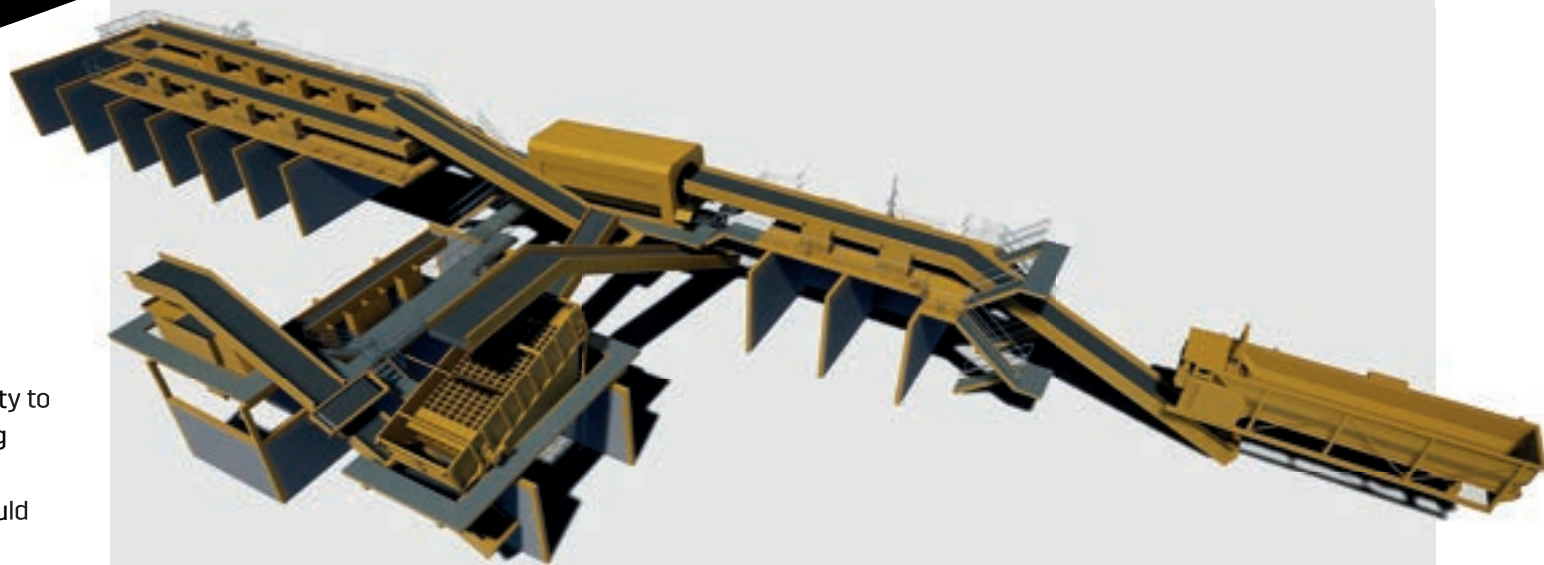
Application DMR (Dry Mixed Recycling and C&I (Commercial and Industrial)).

Throughput 10 tonnes per hour. Recovers up to 10 different waste products.

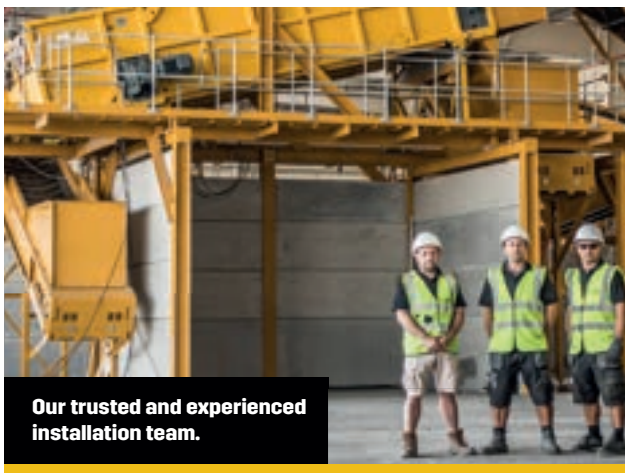
History First time project.

SOLUTION DETAIL

Bag Opener, Pre-Sort Station, Trommel Screen, Ballistic Separator, Magnet, Eddy Current Separator, 2 Bay Picking Station, 2 x 4 Bay Picking Stations.



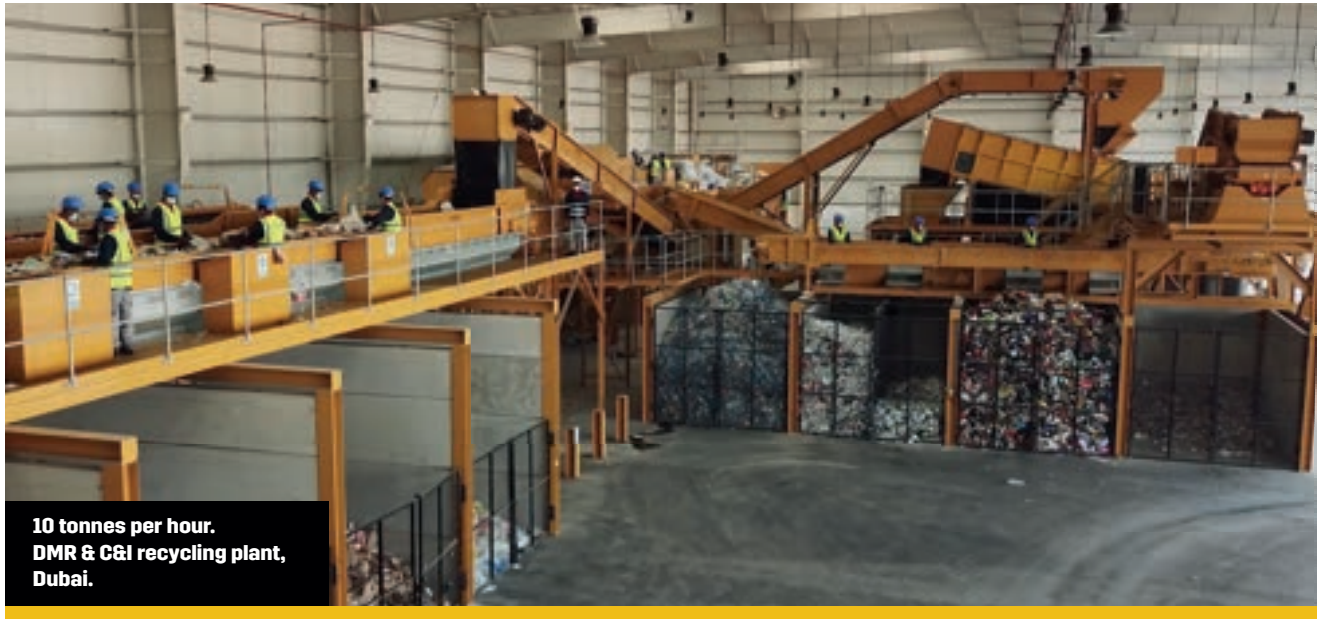
High purity levels, recovery flexibility and install pre-World Expo were essential for DulSCO.



Our trusted and experienced installation team.



Plant used to process all the waste from World Expo 2020 in Dubai.



10 tonnes per hour.
DMR & C&I recycling plant,
Dubai.

“ At DulSCO, we pride ourselves on only working with the best. As this was a vitally important project for us, it required the right contracting partner.

Kiverco has a stellar reputation for the design and build of these types of projects. That, coupled with their excellent support and customer service, made them the perfect choice for helping us achieve operational excellence.”



DulSCO material recovery facility, Dubai.

GOOD TO KNOW

- The proposed return on investment was realised by DulSCO.
- Agreed throughput, recovery and purity levels tested pre-handover as part of Kiverco promise.
- Plant used to process all the waste from World Expo 2020 in Dubai.
- Recovered materials recycled into saleable gifts by DulSCO.
- High volumes (>90%) of ferrous and non-ferrous metal and plastics recovered.
- Install, commission and handover (including operator training) as per agreed project schedule.
- Modular design ensures the plant can grow with the business.
- Excellent aftercare packages including parts, warranties, helpline, and anytime remote access to mission critical data.

KIVERCO®

BESPOKE PLANT • NOV 22
EXCEL

THE CHALLENGE

Excel wanted a reliable, robust and high-quality waste plant to deal with rapidly increasing volumes of waste in East London. The business has quickly become one of the leading waste companies in the region and their existing plant lacked the speed and reliability that only Kiverco can offer.

Location Essex, England.

Footprint 61m x 20m.

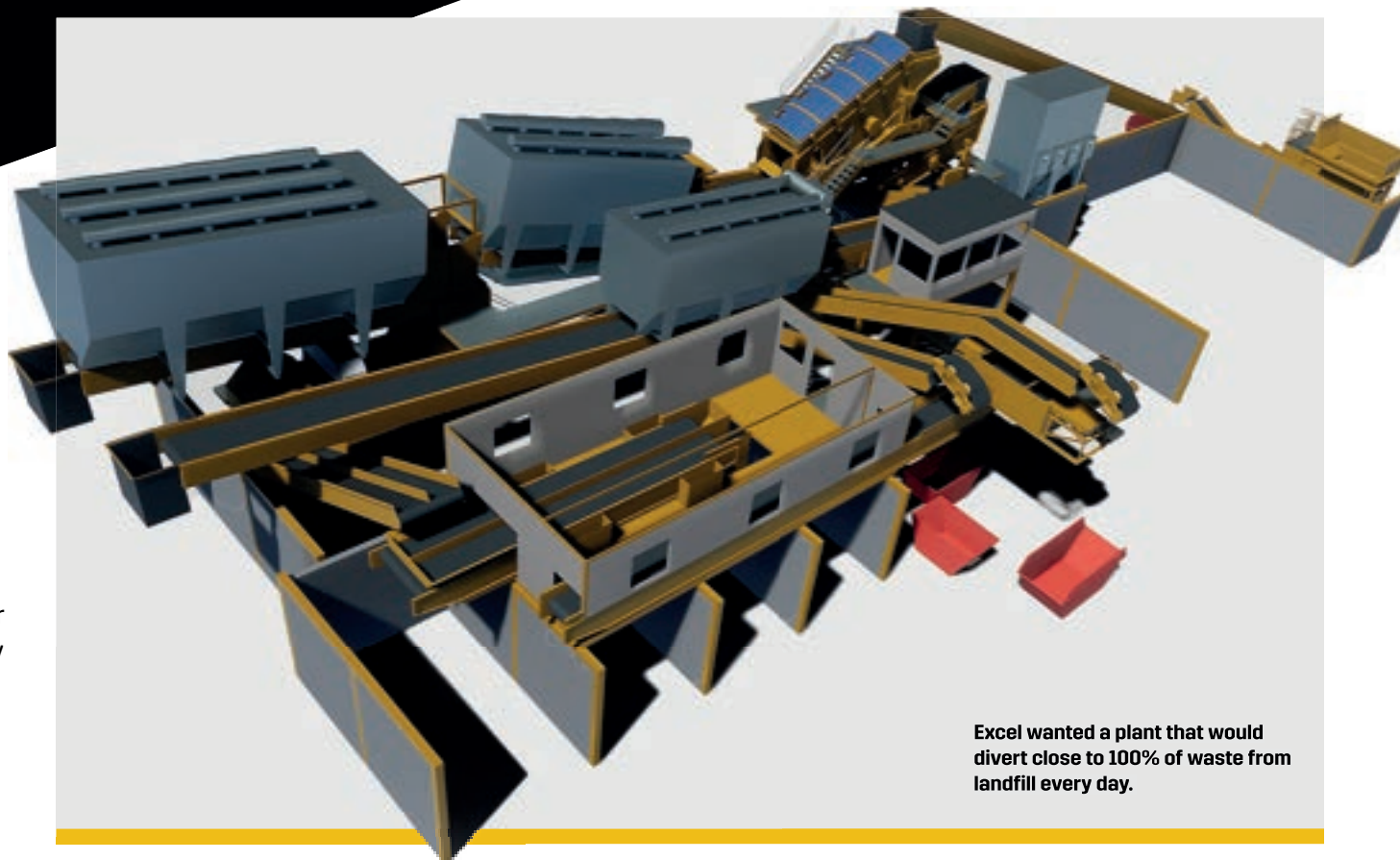
Application Construction and Demolition (C&D).

Throughput 50 tonnes per hour. Recovers up to 10 different waste products.

History First time project.

SOLUTION DETAIL

Shredder, Long Part Separator, Waste Screen, Flip Flow Screen, 2-way and 3-way Density Separators, Magnetic Separator, Eddy Current Separator and NIR (Near Infrared) Optical Sorter.



Excel wanted a plant that would divert close to 100% of waste from landfill every day.



Investment in automation was paramount in the design process.



Dual lane quality control.



50 tonnes per hour.
C&D recycling plant, Essex.

“ It’s impossible not to notice why Kiverco are different and better than the rest. ‘The World’s Toughest Recycling Plant’ is quite a claim.

We chose Kiverco to futureproof us with state-of-the-art waste separation plant. Presales support helped us buy the best thing. And aftercare keeps us moving. Throughput volumes and purity levels spiked immediately. Positive business impact was, and remains, tangible.”



Three-way air separation system increases recovery to >90%.

GOOD TO KNOW

- The proposed return on investment was realised by Excel Waste Management.
- Agreed throughput, recovery and purity levels tested pre-handover as part of Kiverco promise.
- Plant automation greatly reduces manpower requirement from 16 to 7 people.
- Three-way air separation system increases recovery to >90%.
- In-line magnet provision improved metal recovery.
- Install, commission and handover (including operator training) as per agreed project schedule.
- Modular design ensures the plant can grow with the business.
- Excellent aftercare packages including parts, warranties, helpline, and anytime remote access to mission critical data.

THE CHALLENGE

A global leader in waste management that, at time of commissioning, were new to the UK. Following their own due diligence process, they selected Kiverco to provide a waste plant that, because of Kiverco's reputation for toughness, would guarantee unmatched throughput, recovery rates and purity levels.

Location Newcastle upon Tyne, England.

Footprint 78m x 24m.

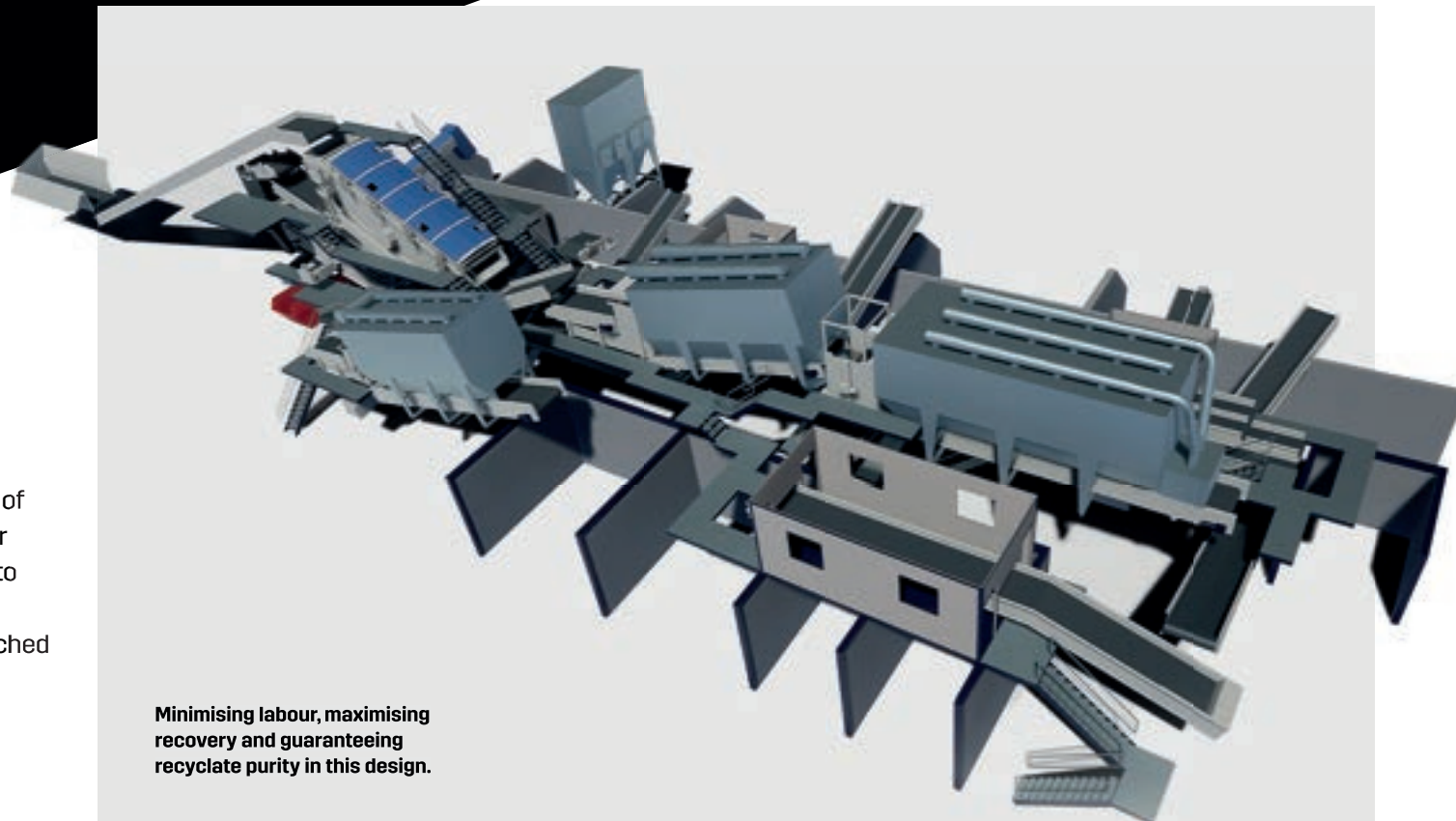
Application Construction and Demolition (C&D).

Throughput 45 tonnes per hour. Recovers up to 10 different waste products.

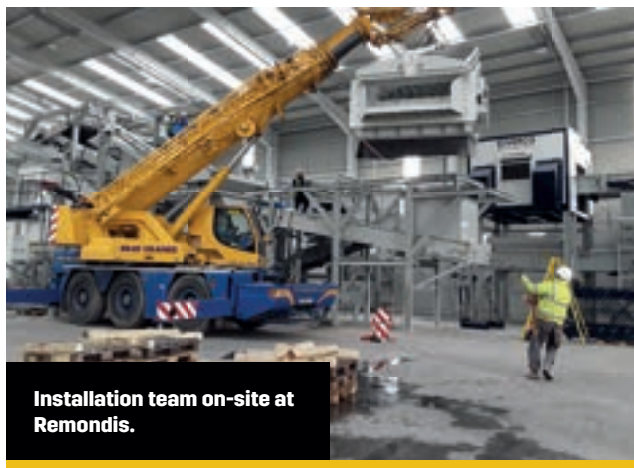
History First time project.

SOLUTION DETAIL

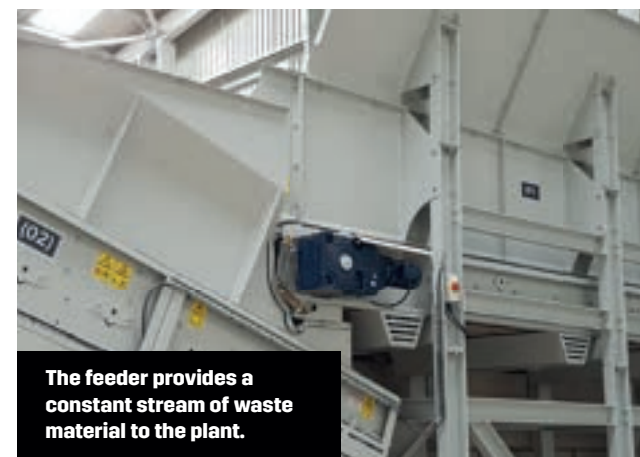
Feeder, High Step Screen, Electromagnet, Flip Flow Screen, 2 Way Density Separator, 3 Way Density Separator, NIR Optical Sorter, In Line Electromagnet, 2 x Bi-Directional Conveyors.



Minimising labour, maximising recovery and guaranteeing recyclate purity in this design.



Installation team on-site at Remondis.



The feeder provides a constant stream of waste material to the plant.



45 tonnes per hour.
C&D recycling plant,
Newcastle upon Tyne.

“ It is very, very capable, solid, hard wearing. The kit can manage well and it has had a good run in now without any major issues. The quality of the build is great. It’s better than what I had before so I would recommend it without hesitation.”



Recovers up to 10 different
waste products.

GOOD TO KNOW

- The proposed return on investment was realised by Remondis.
- Agreed throughput, recovery and purity levels tested pre-handover as part of Kiverco promise.
- Plant automation greatly reduces manpower requirement from 14 to 6 people.
- Three-way air separation system increases recovery to >92%.
- In-line magnet provision improves metal recovery.
- Install, commission and handover (including operator training) as per agreed project schedule.
- Modular design ensures the plant can grow with the business.
- Excellent aftercare packages including parts, warranties, helpline, and anytime remote access to mission critical data.

THE CHALLENGE

This family run Scottish business is renowned for providing the very best in waste management solutions, setting extremely high standards within the industry. Their requirement was a robust waste plant that recovered waste recyclates at a rate and purity level to satisfy their objective of 100% landfill diversion.

Location Inchinnan, Scotland.

Footprint 107m x 17m.

Application Construction and Demolition (C&D).

Throughput 40 tonnes per hour. Recovers up to 10 different waste products.

History First time project.

SOLUTION DETAIL

Feeder, Combi Screen, Magnets, Eddy Current Separator, DS150 Density Separator, 2m wide Optical Sorter, 2 x 3 way Density Separators, a range of Picking Stations.



Designed to meet an increasing volume of waste whilst achieving maximum waste recovery.



Three-way air separation system increases recovery to 92%.



Trap door bins to recover valuable commodities.



40 tonnes per hour.
C&D recycling plant,
Scotland.

“ We were aware of Kiverco’s high quality and performance, not least because we’ve both been in the recycling industry for such a long time. We were, and are, confident with Kiverco.

Together, we’ve designed a plant fit to propel WRC’s future growth and expansion both in terms of volume and quality expectations. A more sustainable future for our business, our local community and for Scotland is what Kiverco are helping us to work towards.”



Plant automation greatly reduces manpower requirement from 14 to 6 people.

GOOD TO KNOW

- The proposed return on investment was realised by WRC Recycling.
- Agreed throughput, recovery and purity levels tested pre-handover as part of Kiverco promise.
- Plant automation greatly reduces manpower requirement from 14 to 6 people.
- Three-way air separation system increases recovery to >92%.
- In-line magnet provision improves metal recovery.
- Install, commission and handover (including operator training) as per agreed project schedule.
- Modular design ensures the plant can grow with the business.
- Excellent aftercare packages including parts, warranties, helpline, and anytime remote access to mission critical data.

Rental Companies.

Kiverco's World's Toughest Recycling Plant sits proudly in the portfolios of some of the world's best Rental Companies.

When a recycling plant is passed from customer to customer so frequently, and when consecutive usage locations can be miles apart – Kiverco is the only choice.

Especially when recycling plant for rent is expected to deliver for decades.

“
We're the confident brand choice. Demands in the Global Rental sector are broad and unpredictable.”

Governments & Local Authorities.

So how do we feel about playing a pivotal role in the requirements of governments? Impacting economies. Supporting how towns, cities, and even nations facilitate recycling at a fundamental level?

It's no problem at all for Kiverco. We've been doing it for 30 years.

Surety. The Most Valuable Attribute of All

We understand that when Kiverco is chosen by Governments and Local Authorities, we are delivering on the exact and immediate needs not only of our customer, but those of the businesses, households and residents that rely on them.

“
Governments and Local Authorities don't just invest taxpayer's money with Kiverco. They invest their reputation too. We protect both.”

Waste Management Companies.

Waste Management Companies that choose Kiverco benefit from the Predictable Profitability that only The World's Toughest Recycling Plant can give.

Because Kiverco recycling plant delivers More Uptime, Higher Sustained Purity and has a Longer Useful Life.

Significant, Serious Operators – Only

Waste Management Companies that choose Kiverco are buy-once, buy-right operators that appreciate the difference between lay down price and lifetime value.

Promising Only What We Can Deliver And Always Delivering What We Promise

Under-specifying and over-promising by some recycling plant manufacturers is a real problem in our world. So Kiverco do the opposite. And by doing so, Kiverco confidently supports the mission-critical promises you make to your customers.

“
Profitability is great. Predictable Profitability is better.”



**The World's
Toughest
Recycling Plant
is also The
World's Most
Sustainable**

We don't want to join today's conversation on sustainability. Because here at Kiverco, we've been having our own conversation about sustainability. For 30 years.

The World's Toughest Recycling Plant is also the World's Most Sustainable. Everybody at Kiverco knows what Kiverco was born to do. To create The World's Toughest Recycling Plant.

Why? Because this means More Uptime, Higher Sustained Purity, and a Longer Useful Life – for you.

But it also means fewer repairs and warranty claims. So fewer environmentally damaging repair cycles, consumables and vehicle journeys. Because the most sustainable recycling plant – is a functioning recycling plant.

**Sustainability is built-in
at Kiverco.**

It has been since 1993.

**KIVERCO®
30 YEARS**

2023 COMPANY BROCHURE | KIVERCO.COM



KIVERCO®
SUSTAINABILITY.

K
**BUILT WITH
BACKBONE**

SUSTAINABILITY

23

KIVERCO®

AFTERCARE.



Welcome to Kiverco Aftercare. Welcome to **Peace of Mind at Point of Sale, Plant Performance Optimisation, and Maximising Uptime.**

The only way to get Predictable Profitability from Recycling Plant, is to invest in plant that delivers More Uptime, Higher Levels of Sustained Purity, and that has a Longer Useful Life.

And there's only one Recycling Plant that can deliver on all those promises. The World's Toughest.

Kiverco Aftercare.

Kiverco's Three Point Aftercare Promise:

1. Peace of Mind at Point of Sale.
2. Plant Performance Optimisation.
3. Maximising Uptime.

1. Peace of Mind at Point of Sale.

Overlapping Sales and Aftersales.

Your Sales Manager and your Aftercare Account Manager double-hand our working relationship. We don't just make big promises before you choose us. There's a determination to deliver on them once you do.

Absolute Clarity Around What Has Actually Been Purchased.

Your Customer Pack is a personal, detailed, clear itinerary of all your products and services. Handbooks, forms, manuals and more. All stored in your own personal, ultra-secure, online space.

Warranties & Guarantees.

This is your tailored, ongoing peace of mind protection. Can include scheduled site checks and maintenance.



2. Plant Performance Optimisation.

Kiverco Performance Monitoring Hardware (PMH).

Real world, real-time/anytime on-plant Performance Monitoring Hardware (PMH) System and Support Packages. The more we understand about performance, the better we can optimise - together.

Maintenance Scheduling.

This is the primary way that we help you to maximise the useful life of your own plant. A little, regular time investment from you means huge financial savings in the long run.

Kiverco Enhance.

Once you're up and running, we can work with you to see if we can make the 'best' - even 'better'. A great example is reviewing how well the plant performs against measurable expectations in the areas of sustained purity.

3. Maximising Uptime.

Consumables.

We'll aim to develop a perfect balance between your stock levels, and our support levels. That way, we will be able to match your exact and immediate consumable needs. Because you'll have consumables exactly when you need them - if not before. The result? Amazing levels of uptime.

Kiverco Response.

Even the impossible to predict is catered for with 'Kiverco Response' repair service and parts support. You're never on your own.

Kiverco Aftercare: Big Picture Impact.

The final point we'd like to make about Kiverco Aftercare nods to our sustainability credentials.

You see, we're not just committed to helping you achieve More Uptime, Higher Sustained Purity and a Longer Useful Plant Life - for you.

As designers and makers of The World's Toughest Recycling Plant, we look at wider global sustainability measures too. Because when the Recycling Plant we create is up and working it's good for you - and the planet.

Because it means fewer repairs and warranty claims. So fewer environmentally damaging repair cycles, consumables and vehicle journeys.

Kiverco Aftercare is not just for our customers - it's for everyone.

KIVERCO®

A GLOBAL BUSINESS.

Kiverco Recycling Plant is Tough enough to deliver Predictable Performance first time, every time - Globally. No matter how far away from our headquarters in Northern Ireland. No matter how challenging terrain and tasks might be.

The only confident brand choice when a Recycling Plant's point-of-use could be thousands of miles from home – is the brand world famous for Toughness.

KIVERCO® UK & IRELAND

Kiverco has installed 400 waste plants in the UK & Ireland since 1993. Our 'Home' market was one of the world's first to seriously tackle Global problems and opportunities associated with waste. So Kiverco's World's Toughest, 'standard setting' approach to the creation of world class recycling plant has helped the Global industry, both directly and indirectly.

KIVERCO® EUROPE

Kiverco has exported to 10 countries across Europe for almost 20 years, mainly via a distributor network. Markets such as France, Germany, Switzerland, the Benelux, Spain, Poland, Hungary and Romania are key markets for us.

KIVERCO® MIDDLE EAST & NORTH AFRICA

Although waste processing is relatively new to these markets, Kiverco has spent 10 years building partnerships and exporting to the UAE (United Arab Emirates) and

the Kingdom of Saudi Arabia. When Governments and businesses alike do anything for the first time, they want surety. A safe pair of hands. Predictable Performance. And as a consequence, Kiverco has delivered one of the world's biggest global flagship recycling gigaprojects in this region.

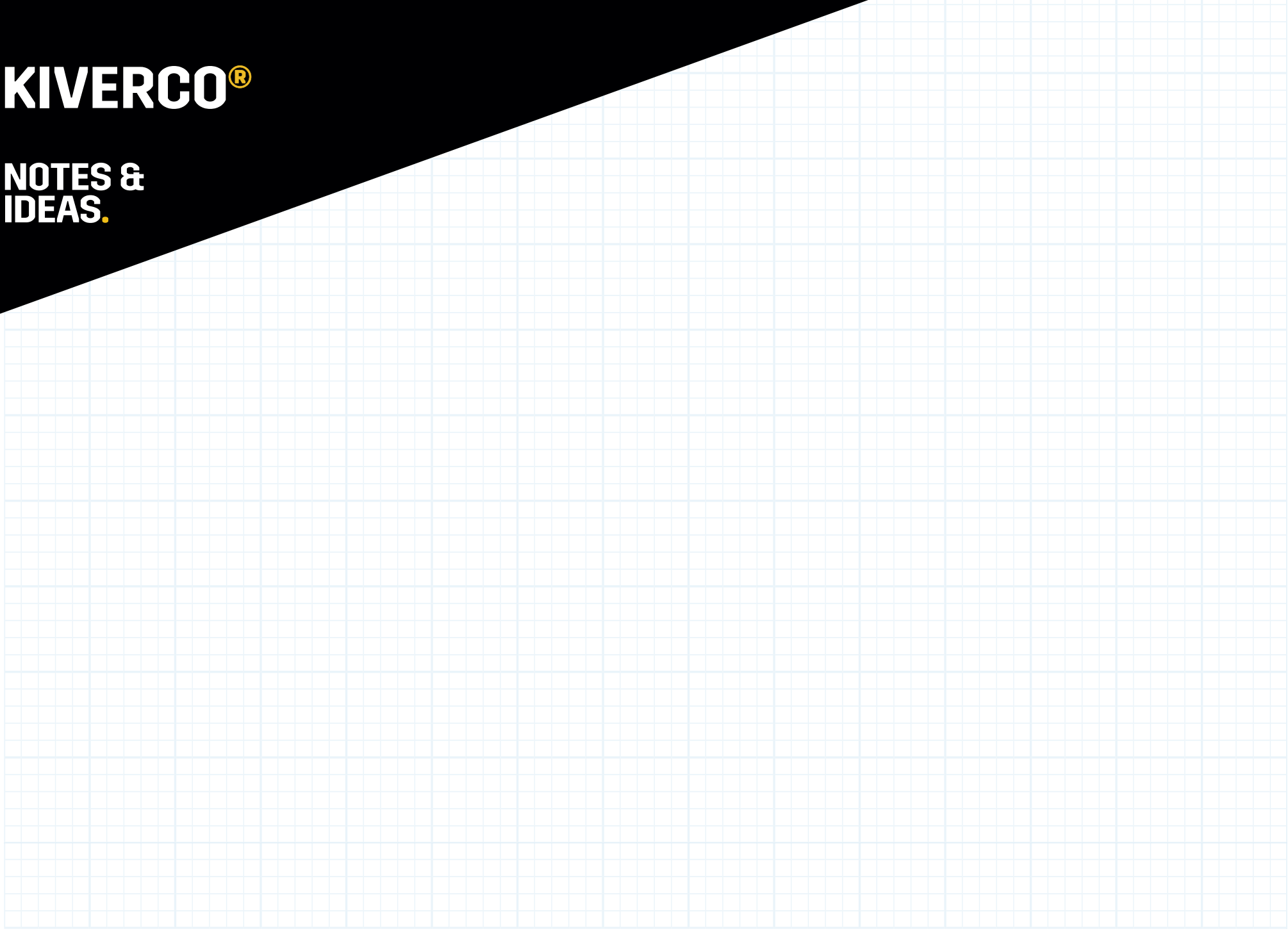
KIVERCO® AUSTRALIA & NEW ZEALAND

Kiverco has an established, multi-customer presence in Australia and New Zealand. This territory is also where one of our most important global dealerships, with Lincom, is located.



KIVERCO®

NOTES & IDEAS.



Our team is always happy to answer any questions, queries or concerns you have.

Phones are covered Monday to Thursday 8am to 5.15pm and Friday 8am to 2pm. We answer all emails quickly.

You can call +44 (0) 28 8773 8811, email info@kiverco.com or you're welcome to make an appointment to see us at Kiverco Limited, 26 Gortnaglough Road, Dungannon, Co. Tyrone, N. Ireland, BT71 5EE.



KIVERCO LTD

26 Gortanaglough Road
Dungannon
County Tyrone
Northern Ireland
BT71 5EE

+44 (0) 28 8773 8811
info@kiverco.com

“ I am not sure whether anything we have ever made will last forever.

And I’m not sure if anything we’ll make in the future will last forever, either.

But that is always our intention.”

**AIDAN MCKIVER.
FOUNDER, KIVERCO.**

KIVERCO, PRINTING & SUSTAINABILITY

We always choose print partners that demonstrate a dedication towards positive environmental consideration and management. This is likely to include ISO 14001 Certification, FSC Certification, and PEFC Certification. This means they’re working towards internationally agreed sustainability-focused standards, setting out the requirements for effective environmental management systems. Products come from responsibly managed forests that provide environmental, social and economic benefits, and our chosen partners also promote sustainable forest management assessed through independent third party accreditation. Print partners also promote initiatives that encourage the widespread use of vegetable inks, extensive energy and water saving initiatives as well as self storage and use and disposal of chemicals that recycle all possible materials to cut waste emissions. We also commit to shorter print runs and print-on-demand wherever possible in order to help reduce waste.

KIVERCO®
30 YEARS
SPECIAL EDITION

KIVERCO®
The World's Toughest
Recycling Plant Since 1993

